

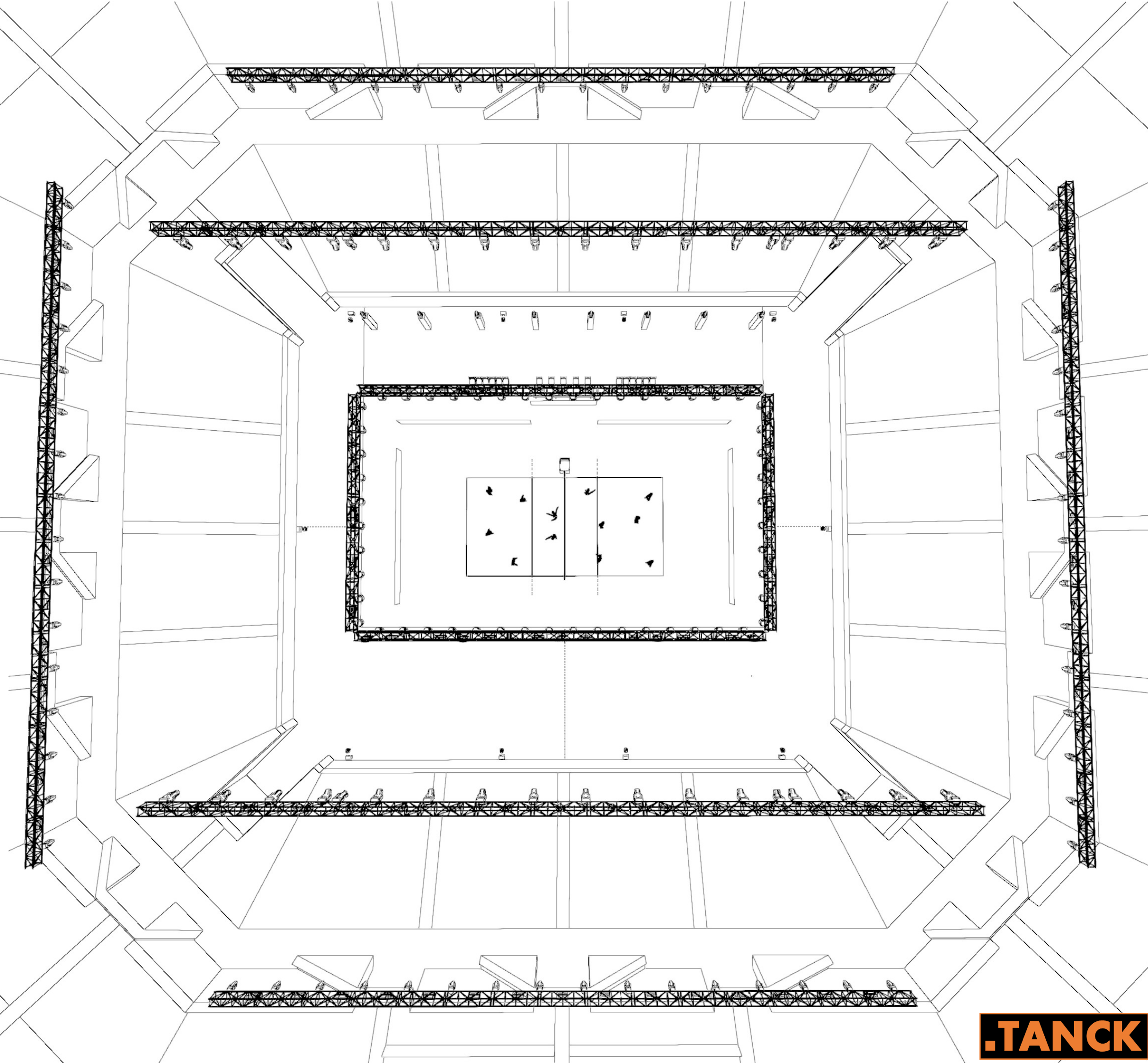


**Invitation to tender:
Giant LED Displays, Event Lighting and Audio System
for Volleyball Nations League Hong Kong 2025**

Annex C

**Volleyball Nations
League**

Template Lighting Plots



Fixtures

List of approved substitutes below.
Contact VW to discuss any other substitutes.
Legend

Symbol	Name	Count
	Mac Ultra Performance	10
	MAC Axiom	124
	BMFL FollowSpot LT	4
	Mac Ultra Wash (Competition Lighting)	32
	Impression X4 L	30
	Tour Hazer 2	10
	AF-1	10
	P-10	86

Control Package

1x MA3 Fullsize or Light (MAIN)
1x MA3 Fullsize or Light or Compact XT (BACKUP)
Software Version latest stable MA3 release
NPU(s) if parameter count requires
Wireless access to MA-Net for remote tablet control

Preferred Unit Substitute

Preferred Unit	Substitute
MAC Ultra Performance	MAC III Profile MAC Viper Profile MAC Encore Profile VL4000 Spot VL3500 Spot

MUST FIT 2 x CUSTOM GLASS GOBO IN EACH FIXTURE (YOU PROVIDE GOBOS TO VW SPEC) IN ROTATING WHEEL

GLP X5 Wash	Substitute
	Robe K20 Robe Tarrantula Martin Quantum BMFL Wash/Washbeam Rogue R3X Wash VL6500/VLZ Wash Mac Ultra/Encore Wash

Martin MAC Axiom	Substitute
	CP Mythos 2 Robe MegaPointe Ayrton Karif CP Super Sharpy Robe Pointe

SGM P-10	Substitute
	GLP JDC1 Similar Output SGM Unit Solaris Flare Elation Protron Eclipse SGM Q-7 Chauvet Color Strike M

BMFL Followspot	Substitute
	See followspot note

Mac Ultra Wash	Substitute
	See competition lighting note

Hazers	Substitute
	Professional WATER BASED units -NOT fog/smoke machines - NOT oil based

Lighting Plot (Overview)

NOTE: FLOOR LIGHTING
Suggest these units are on 1m towers, but the exact height and placing will vary according to venue restrictions and audience sightlines.

The aim is for the beams to clear the players benches and give an uninterrupted look for CAM 1.

NOTE: FOLLOWSPOTS
4 independent channels of remote followspots are required.
If it is not possible to source these, conventional HMI units may be used, of sufficient power.

Operators must be connected via comms headsets to the lighting operator.

NOTE: ARENA LIGHTING
Arena lighting refers to the 4 outer trusses, as noted. These units give important audience backlight and beam effects.

It is possible that venue/event constraints mean these arena trusses cannot be rigged in the suggested location. In this case, please work within constraints to achieve the desired look. Some options include:
-Reduced truss lengths or smaller truss 'pods'
-A series of floor supported truss towers, goalposts or trusses on windup stands
-Units affixed directly to building rails or placed on floor bases
-A combination of the above, ensuring even coverage around the arena space

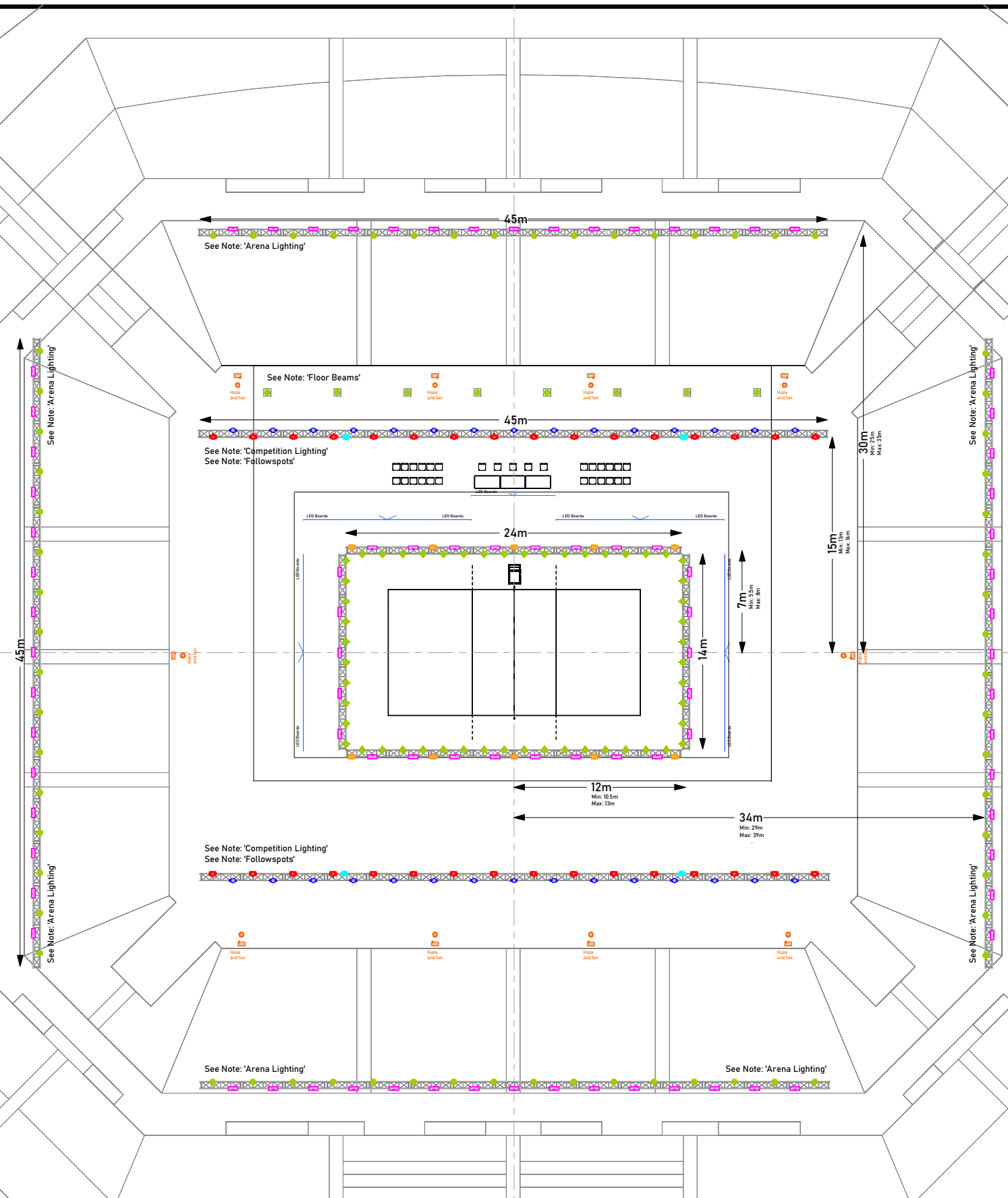
NOTE: COMPETITION LIGHTING (RED UNITS)

Competition lighting must meet the technical requirements in the latest VNL Rider. The MAC Ultra Wash units drawn show a good way to do this for a typical arena. If the MAC Ultra Wash is not available, other approved units types for are:
-Other top range LED or discharge washes (Robe, Ayrton, VL, CP, etc)
-Phillips Arena Vision LED
-Arri HMI Fresnel w/ mechanical dimming
-Arri S360C or similar soft light
-High power LED panel units (SGM, etc)

The units must all be of the same type and used exclusively for lighting the competition. The final quantity and arrangement of units will be confirmed by the VW Lighting team based on our calculations to ensure the VNL Rider conditions are met.

In some cases, the venue will have existing competition lighting installed. This can be used in place of hired-in units if it can be demonstrated from specific on-site testing and data readings that it meets the VNL Rider requirements. If it is not possible to confirm this, units will have to be hired in.

If venue competition lighting is used, special attention must be given to ensure production elements added for the VNL event but not present during testing (lighting, rigging, video, cameras) do not create shadows.



Fixtures

List of approved substitutes below.
Contact VW to discuss any other substitutes.
Legend

Symbol	Name	Count
	Mac Ultra Performance	10
	MAC Axiom	124
	BMFL FollowSpot LT	4
	Mac Ultra Wash (Competition Lighting)	32
	Impression X4 L	30
	Tour Hazer 2	10
	AF-1	10
	P-10	86

Control Package

1x MA3 Fullsize or Light (MAIN)
1x MA3 Fullsize or Light or Compact XT (BACKUP)
Software Version latest stable MA3 release
NPU(s) if parameter count requires
Wireless access to MA-Net for remote tablet control

Preferred Unit Substitute

Preferred Unit	Substitute
MAC Ultra Performance	MAC III Profile
	MAC Viper Profile
	MAC Encore Profile
	VL4000 Spot
	VL3500 Spot

MUST FIT 2 x CUSTOM GLASS GOBO IN EACH FIXTURE (YOU PROVIDE GOBOS TO VW SPEC) IN ROTATING WHEEL

GLP X5 Wash	Substitute
	Robe K20
	Robe Tarrantula
	Martin Quantum
	BMFL Wash/Washbeam
	Rogue R3X Wash
	VL6500/VLZ Wash
	Mac Ultra/Encore Wash

Martin MAC Axiom	Substitute
	CP Mythos 2
	Robe MegaPointe
	Ayrton Karif
	CP Super Sharpy
	Robe Pointe

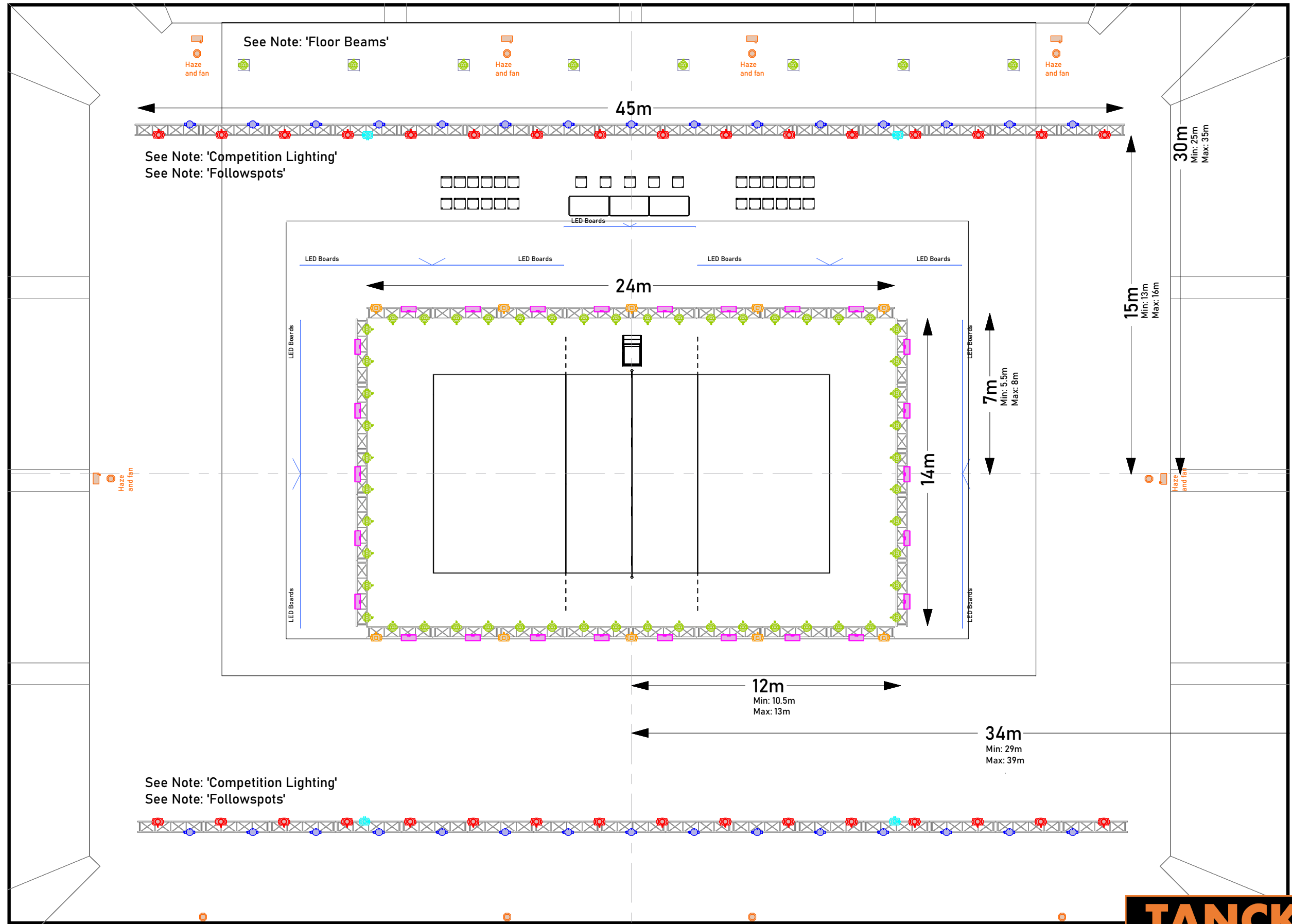
SGM P-10	Substitute
	GLP JDC1
	Similar Output SGM Unit
	Solaris Flare
	Elation Protron Eclipse
	SGM Q-7
	Chauvet Color Strike M

BMFL Followspot	Substitute
	See followspot note

Mac Ultra Wash	Substitute
	See competition lighting note

Hazers	Substitute
	Professional WATER BASED units
	-NOT fog/smoke machines
	- NOT oil based

Lighting Plot (Court)



Fixtures

List of approved substitutes below.
Contact VW to discuss any other substitutes.
Legend

Symbol	Name	Count
	Mac Ultra Performance	10
	MAC Axiom	124
	BMFL FollowSpot LT	4
	Mac Ultra Wash (Competition Lighting)	32
	Impression X4 L	30
	Tour Hazer 2	10
	AF-1	10
	P-10	86

Control Package

1x MA3 Fullsize or Light (MAIN)
1x MA3 Fullsize or Light or Compact XT (BACKUP)
Software Version latest stable MA3 release
NPU(s) if parameter count requires
Wireless access to MA-Net for remote tablet control

Preferred Unit Substitute

MAC Ultra Performance
 MAC III Profile
 MAC Viper Profile
 MAC Encore Profile
 VL4000 Spot
 VL3500 Spot

MUST FIT 2 x CUSTOM GLASS GOBO IN EACH FIXTURE (YOU PROVIDE GOBOS TO VW SPEC) IN ROTATING WHEEL

GLP X5 Wash
 Robe K20
 Robe Tarrantula
 Martin Quantum
 BMFL Wash/Washbeam
 Rogue R3X Wash
 VL6500/VLZ Wash
 Mac Ultra/Encore Wash

Martin MAC Axiom
 CP Mythos 2
 Robe MegaPointe
 Ayrton Karif
 CP Super Sharpy
 Robe Pointe

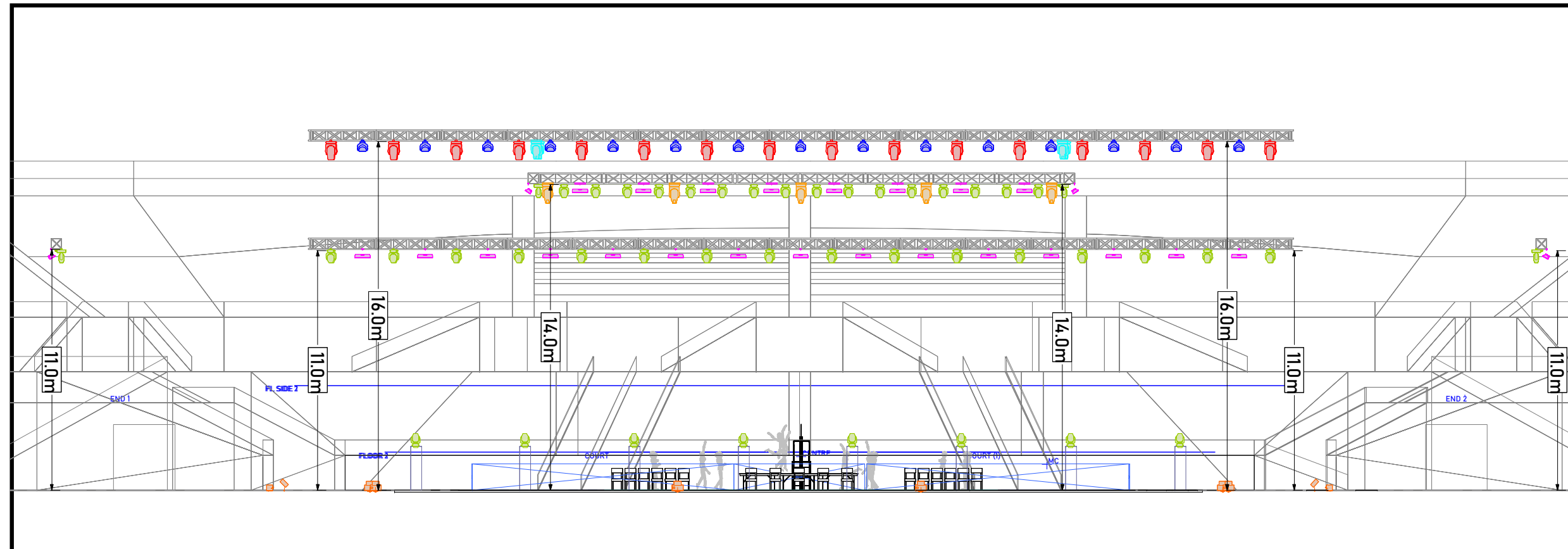
SGM P-10
 GLP JDC1
 Similar Output SGM Unit
 Solaris Flare
 Elation Protron Eclipse
 SGM Q-7
 Chauvet Color Strike M

BMFL Followspot
 See followspot note

Mac Ultra Wash
 See competition lighting note

Hazers
 Professional WATER BASED units
 -NOT fog/smoke machines
 - NOT oil based

Lighting (Section View)



THERE MUST BE NO OBSTRUCTION 12.5m OR LESS FROM THE FLOOR ABOVE THE FIELD OF PLAY - THIS IS A SPORT REGULATION REQUIREMENT

